

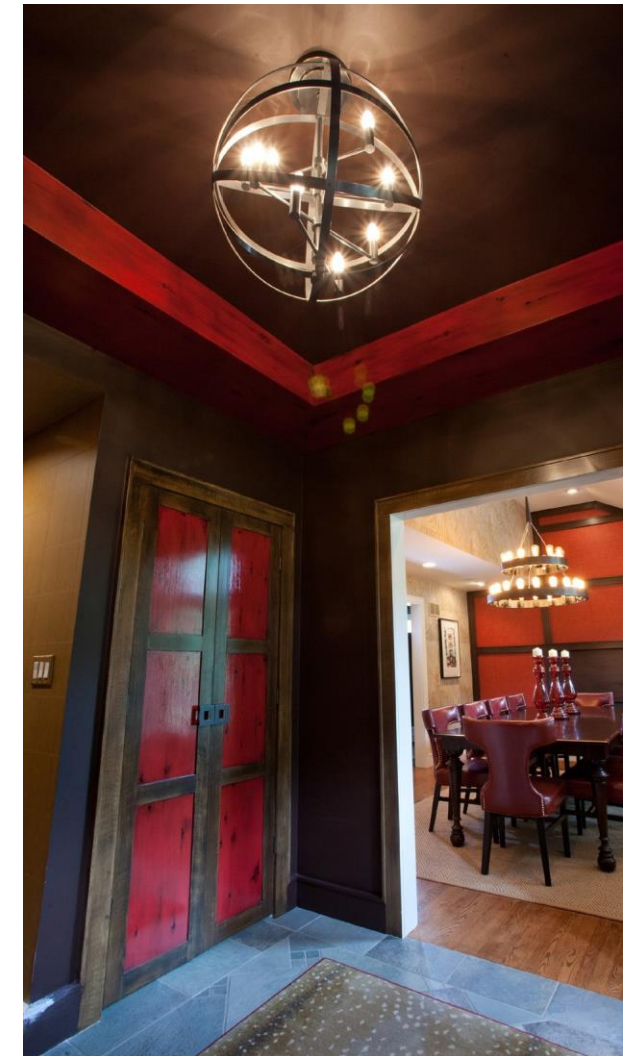
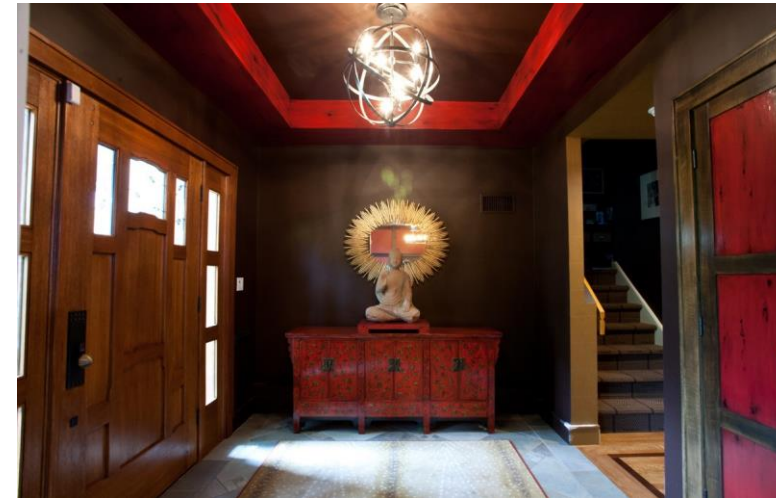
Living with Color

Designer Javier Fernandez, of Transitional Designs in Norwood, NJ, gave his clients beautiful living spaces that are vibrant, bold and full of personality.



Living Room

The living area is a very large and long space. I divided the space in two seating spaces. One side is the television area where I placed a sofa by Lee and chairs by Hallman. The media cabinet is by Global Views. The fabrics for both upholstery and window treatments are from Robert Allen, Stout and Stroheim. The second seating area created is a more intimate seating space. I added a bar cabinet and four large club chairs in a navy velvet all by Kravet. A funky iron and wood round cocktail table adds an accent piece. The case goods throughout the room are by Global Views, Noir Furniture and Zuo Mod. The lighting in the room is by Robert Abbey. The walls were painted in a charcoal grey color, which worked beautifully as a great base color to highlight my clients' art work.



Dining Room

They had a very strong desire to incorporate red into the design of their dining room space. I decided to use the fireplace as the focal accent wall. Wood panels were designed with red grass cloth wall covering by Phillips Jefferies. The rest of the room's walls are done in a beautiful pony hair wall covering by Donghia. As mentioned, my clients' wanted to showcase their art collection. We decided to use the clients' beautiful wooden Buddha head, which was purchased during their travels and meant a great deal to them. To showcase this art, we constructed a custom pedestal to hold the large and very heavy piece. To complete the dining room, I used red leather chairs from Sunpan to coordinate with the accent wall. The light fixtures from Robert Abbey complemented the architectural elements.





•••

Great Space for Entertaining

For this project my client wanted to create a very informal living and dining area to reflect their lifestyle and passion for art.

•••



Star POWER

My client's daughter is an aspiring actress who is passionate about the Broadway theater. She wanted to incorporate the colors of a Broadway Playbill into the design of her bedroom. To accomplish the task, the walls were painted in a neutral light grey and the ceiling in a bold yellow. For added drama, I added a one-inch black border and an eight-inch white border to capture the colors and style of the Playbill. The ceiling was completed with a sunburst flush mount light fixture. I used the bold yellow again on the built-ins, with the trim in black just like the ceiling for a tailored look. The doors of the built-ins were wall covered in a mirrored wallcovering displaying the New York skyline. The built-ins were completed with Lucite knobs. I used all white lacquered finished furniture for a youthful fresh light feel. A small club chair was reupholstered in black patent faux leather for a funky look. The table lamp is clear glass with a black border coordinating with both the ceiling and built-ins. The bedding and drapes all in black and white complete the look. The client was thrilled with the room.

•
•
•



Kids' Playroom

My client wanted bold colors and a room that fueled her children's creativity. We transformed the old storage space underneath the staircase into a playhouse by simply adding a door and tiny windows. On one side of the staircase I added a blackboard and on the other side the wall was covered in a laminate wood flooring to add texture completing the look of the playhouse. A custom designed writing desk with seating to accommodate both children for their art and homework assignments. The entire area is designed for playing, imagining and creating. To ensure that bold colors and elements were incorporated according to the homeowners' desire, we used wallcovering with three different strip patterns in green and navy colors. All wallcovering is by York Wallcoverings. An orange pendant light and sconces, by Robert Abbey, were added to create yet more pops of color. The doors of the playhouse were painted in orange to coordinate with

-
-
-



complement
d green used
complete
om doors and
en and navy
nail heads.
navy color.
y Zuo Mod.
erns in a navy
Carpets.

Transitional Design is a complete interior design firm servicing both residential and commercial clients in the tri-state area. It offers clients everything from fine furnishings, custom built-ins and complete renovations, special decorative finishes, custom drapery and upholstery. For more info, visit www.transitionaldesignz.com or contact Javier Fernandez at (201) 694-0798; info@designsbyjavier.com